



**SAFE TO
THRIVE**



*Personalized
catalog created
for
Energie Sector*

Contents

Category	Page
Protective Clothing	1-3
Hand Protection	4-6
Foot Protection	6-8
Eye and Face Protection	8-9
Head Protection	9-10
Respiratory Protection	10-11
Fall Protection	11-12
Hearing Protection	12
Road Safety	13
Lockout-Tagout	13
Lighting Products	14
First Aid	14
Other Protection Products	14

Quick Contact List

Customer Relations	
Email:	crc@spi.com
Telephone:	1 800 465-6822

Protective Clothing



**Sweaters and Polos - Technoport
Gildan 10 oz Ultra Cotton Round
Neck T-Shirt**

SPI # : VGI2000



**Coats and Vests - Kosto High-
Visibility FR Jacket with Detachable
Hood and Arc Flash Protection**

SPI # : VGKF65



**Work Shirts - Kosto Protective
Work Shirt for Aluminum Smelter**

SPI # : VHKA01



**Coats and Vests - Kosto Aluskin
Molten Metals and Heat Resistant
High Visibility Shirt**

SPI # : VHKA60



**Coats and Vests - Kosto Insulated
Flame Retardant and Arc Flash
Resistant High Visibility Winter
Jacket**

SPI # : VMKF70



**Coats and Vests - Kosto High
Visibility Flame Resistant and
ArcFlash Rain Coat**

SPI # : VMKF60



**Overalls - Kosto Flame Retardant
and Arc Flash Resistant Insulated
High Visibility Overall**

SPI # : VPKF70



**Overalls - Kosto Dazzle High
Visibility, Flame Resistant and
ArcFlash Rain Pants**

SPI # : VPKF60



**Pants - Kosto Lightweight High-
Visibility Ripstop Summer Work
Pants**

SPI # : VPK86



**Pants - Kosto Aluskin Protective
Work Pants for Aluminum Smelter
and Welding**

SPI # : VPKA3

Protective Clothing



Pants - Big Bill 2947 Navy Low Rise Fit Work Pants

SPI # : VPA00



Pants - Big Bill Westex 3233US9 FR Cargo Pants With Double Reinforced Knees

SPI # : VPAE100



Pants - Kosto Aluskin High-Visibility Work Pants for Aluminum Smelter and Welding

SPI # : VPKA21



Coveralls - Kosto Aluskin Work Coverall for Aluminum Smelter and Welding with 4" Reflective Tape

SPI # : VCKA01



Coveralls - Kosto Hi-Viz Polyester-Cotton Twill Coverall with Pockets

SPI # : VCK2



Coveralls - Kosto Ellika Woman Work Coverall with 4" Reflective Tapes

SPI # : VCKD52



Coveralls - Kosto 100% Cotton FR and Arc Flash Work Coverall

SPI # : VCKF01



Rainsuits - Kosto 3 Pieces High Visibility Rainsuit CSA Approved

SPI # : VHK300



Coveralls - Dupont ProShield® 10 Light-Duty Blue Disposable Coverall With Hood

SPI # : VCO371



Coveralls - DuPont™ Tyvek® 400 Breathable Particle-Resistant Coveralls with Attached Hood

SPI # : VCO387

Protective Clothing



**Coveralls - DuPont® Tyvek® TY800
Coverall with Hood Chemical
Protective Category III**
SPI #: VCO32



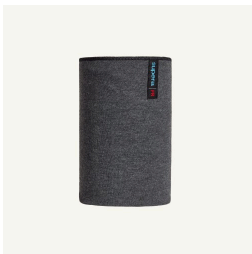
**Toques, Balaclavas and Neck
Warmers - Kosto Fire Retardant
and ArcFlash Beanie**
SPI #: THKF32



**Toques, Balaclavas and Neck
Warmers - Kosto Fire and Arc
Flash Resistant Neck Warmer**
SPI #: THKF10



**Toques, Balaclavas and Neck
Warmers - Kosto Stretchable Knit
Neck Warmer**
SPI #: THKC1



**Toques, Balaclavas and Neck
Warmers - Superior Glove
Supera™ Ultra Soft FR Neck
Protector**
SPI #: THC017



**Toques, Balaclavas and Neck
Warmers - Kosto FR and ArcFlash
Balaclava**
SPI #: THKF20



**Toques, Balaclavas and Neck
Warmers - Kosto FR and Arc Flash
Balaclava**
SPI #: THKF5



**Socks - Kosto Merino Work Socks
Performance+**
SPI #: PAK005



**Other Protective Clothing
Accessories - J. AUDET Jr Fireproof
leather belt for men JA300 FR with
Velcro Closure**
SPI #: JA300FR



**Other Protective Clothing
Accessories - Kuny's Leather 2"
Elastic Suspenders With Clip**
SPI #: VBR008

Hand Protection



Cut-Resistant Gloves - Kosto PU Coated High Density Polyethylene (HPPE) Cut-Resistant A4 Work Gloves

SPI # : MKV212



Coated Gloves - Kosto A6 Cut Resistance Gloves with Nitrile Foam Coated Palm

SPI # : MKV106



Cut-Resistant Gloves - Kosto Polyurethane Coated High Density Polyethylene Cut-Resistant Work Gloves

SPI # : MKV070



Cut-Resistant Gloves - Kosto Foam Nitrile Coated High Density Polyethylene Cut-Resistant Work Gloves

SPI # : MKV349



Leather Gloves - Kosto Full Grain Leather Driver Style Work Gloves with Reinforced Fingertips

SPI # : MKG009



Cut-Resistant Gloves - Kosto Cut-Resistance A9 Safety Gloves

SPI # : MKV119



Winter Gloves - Kosto Full-Grain Leather Winter Work Gloves

SPI # : MGG312



Leather Gloves - Kosto Sheepskin Leather Driver Gloves

SPI # : MGG044



Coated Gloves - Kosto Nitrile Coated Polyester Work Gloves

SPI # : MKC117



Coated Gloves - Kosto XDex Foam PVC Coated Work Gloves on Nylon Base

SPI # : MKC167

Hand Protection



Knit Gloves / Cotton - Kosto Polyester and Cotton Knit Work Gloves

SPI # : MGJ011



Coated Gloves - Kosto Abrasion Resistant Fully Nitrile Coated Work Gloves

SPI # : MGC048



Arc Flash Protection Gloves - Ansell ActivArmr® Arc Flash Flame and Cut-Resistant Work Gloves

SPI # : MGCW01



Coated Gloves - Ansell HyFlex® 11-840 Abrasion Resistant Work Gloves with Foam Nitrile Coated Palm for...

SPI # : MGC615



Coated Gloves - Ansell HyFlex® 11-818 Ultralight Multi-Purpose Work Gloves with Thin Nitrile Foam...

SPI # : MGC614



Winter Gloves - SHOWA TEMRES 282 Cold Protection Gloves

SPI # : MGCX91



Cut-Resistant Gloves - Superior Glove Endura® Leather Cut-Resistant Driver Work Gloves

SPI # : MGV165



Leather Gloves - Superior Glove Clutch Gear® High-Dexterity Mechanics Work Gloves with Abrasion...

SPI # : MGG692



Leather Gloves - Superior Glove Endura® 378GAX Abrasion Resistant Driver Work Gloves

SPI # : 378GAX



Leather Gloves - Superior Glove Endura® 378GKTA Driver Style Goatskin Work Gloves

SPI # : MGGY71

Hand Protection



Coated Gloves - Ansell ALPHATEC SOLVEX 37-175 Nitrile Compound Gloves for Chemical Resistance
 SPI #: MGC140



Coated Gloves - Ansell AlphaTec® 87-224 13" Chemical Resistant Rubber-Coated Neoprene Work Gloves
 SPI #: MGC104



Coated Gloves - Ansell AlphaTec® Solvex® 37-145 Chemical-Resistant Nitrile Gloves
 SPI #: MGC133



Disposable Gloves - Kosto Latex-Free Nitrile Disposable Gloves with Textured Fingertips
 SPI #: MKC115



Disposable Gloves - SHOWA 8005PF EBT High-Dexterity Biodegradable Disposable Gloves Chemical &...
 SPI #: MGC136



Safety Sleeves - Superior Glove CutBan Cut-Resistant and STAYz-UP™ Armbands Work Sleeves with Thumb...
 SPI #: VMN140



Safety Sleeves - DuPont Tyvek® 400 Ultimate Safety Sleeve for Hazardous Work
 SPI #: VMN029



Hand Protection Accessories - Hot Hands Hand Warmers
 SPI #: MVA009

Foot Protection



Work Boots - Kosto AirTech Pro Metal-Free Work Boots
 SPI #: PBK00



Work Boots with Metatarsal Protector - Kosto AirMet Metal-Free Work Boots with Internal Poron XRD® Metguard
 SPI #: PBK060

Foot Protection



Work Boots - Royer Agility 8"
Metal-Free Work Boots with
Airflow Waterproof Membrane

SPI #: PBR600



**Work Boots - Royer 2D 8" Shock
Resistant Work Boots with Steel
Toe Plate**

SPI #: PBR180



**Waterproof Work Boots -
Timberland PRO® Boondock
Insulated Composite Toe Work
Boot**

SPI #: S896460



**Boots for Specific Applications -
Viking Synthetic Rubber Forestry
Boots**

SPI #: PBF010



Overshoes - Neos Navigator 15"
Lightweight Nylon Overshoes with
Foam Polyurethane Insulation

SPI #: PBH024



**Cleats - Surewex K1 Mid-Sole
Original Profile Centered Ice Cleats**

SPI #: PCR035



Overshoes - DuPont Tyvek 5"
Limited Use Shoe Cover with
Elastic

SPI #: VCB311



**Overshoes - DuPont™ Tyvek® 400
Slip-Resistant Safety Shoe Covers
for Hazardous Workspaces**

SPI #: VCB310



**Overshoes - DuPont Tyvek 400
Full-Length Tyvek Boot Covers**

SPI #: VCB301



**Footwear Accessories - 12V
LITHIUM INSOLES & BATTERY
HEATING KIT**

SPI #: 10-KSB12L

Foot Protection



**Footwear Accessories - Hot Hands
Toe Warmers**

SPI # : PVA009



**Footwear Accessories - Volant
James Shoe Fresh 100ml**

SPI # : PEN051

Eye and Face Protection



**Safety Glasses - Safety Glasses,
Wave Series with antifog lens**

SPI # : YLK48



**Safety Glasses - Kosto Kloud
Safety Glasses with K-MAX antifog
treatment**

SPI # : YLK28



**Safety Glasses - Kosto Freedom
Series Safety Glasses**

SPI # : YLU07



**Safety Glasses - Kosto K Series
Lightweight Adjustable Temple
Safety Glasses**

SPI # : YLU47



**Safety Glasses - 3M™ Privo Safety
Glasses with Anti-Fog Coating**

SPI # : YLUZ7



**Safety Glasses - 3M™ Solus
Safety Glasses with Scotchgard™
Anti-Fog Lens**

SPI # : YLU18



**Safety Glasses - 3M™ SecureFit™
400 Series Safety Glasses with
Anti-fog Lens**

SPI # : YLUX78-0



**Safety Glasses - PIP Techno
Rimless Anti-fog Safety Glasses
with A4 Coating**

SPI # : YLU850

Eye and Face Protection



Safety Glasses - Genesis XC Safety Glasses with HydroShield Anti-Fog Coating
SPI #: YLUX74-0



Safety Glasses - Anti-fog Protective Safety Glasses, Bearkat
SPI #: YLU5



Safety Glasses - "Visitor" model clear safety glasses
SPI #: YLU001



Safety Glasses - Work Glasses for Visitors
SPI #: PSBY-007



Faceshields - PIP Dynamic Universal Fit PETG Die Cut Safety Visor Die Cut
SPI #: YVIEP815

Head Protection



General Use Hard Hats - Kosto K-PRO Type 1 Hard Hat with Ratchet Suspension
SPI #: TCK10



General Use Hard Hats - Petzl Vertex Type 1 Safety Helmet with Dual Chinstrap
SPI #: TCNA010BA



General Use Hard Hats - Dynamic Whistler Safety Hard Hat Type I Class E with SURE LOCK Fit System
SPI #: TCR94



General Use Hard Hats - Dynamic Mont-Blanc™ HP542R Type II Class E High-Impact Protection Safety Helmet
SPI #: TCRHP542R

Head Protection



Holders and Adapters - 3M™
Peltor Helmet Adapter for Visors,
2/Box
 SPI #: OAD001



Other Hard Hat Accessories - 3/4"
Polyester Chinstrap
 SPI #: TME004



Hard Hat Liners - Kosto Fire
Resistant Cotton Hard Hat Winter
Liner
 SPI #: THD003



Hard Hat Liners - Kosto Quilted FR
Cotton Helmet Liner
 SPI #: THD008



Hard Hat Liners - Cotton Hard Hat
Liner with Chin Strap
 SPI #: HL-WL-3



Hard Hat Liners - Helmet Lining
with Face Mask Down to the
Shoulders
 SPI #: MD0023

Respiratory Protection



Cartridges and Filters - 3M™ 2091
P100 Particulate Filters, 2/pkg
 SPI #: RFI013



Cartridges and Filters - 3M™
60921 Organic Vapor Cartridges
with P100 Filter, 2/pkg
 SPI #: RCA742



Half-Mask Respirators - 3M™
7500 Reusable Half-Mask
Respirator with Cool Flow™ Valve
& Adjustable Harness
 SPI #: RMD010



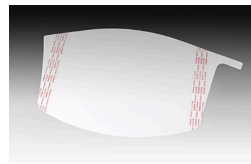
Cartridges and Accessories - 3M™
Adflo™ Replacement Cartridges,
15-0499-99X06, 6 per case
 SPI #: RFI084

Respiratory Protection



PAPR Accessoires - 3M™ Versaflo M-445 Standard Outer Hood

SPI # : 5020.724.001



PAPR Accessoires - 3M™ Versaflo™ Peel-Off Visor Covers for M-927 Visors, 40 /Pck

SPI # : RPR076



PAPR Accessoires - 3M™ Versaflo™ M-935 Standard Face Seal

SPI # : RTR051



Cleaners and Disinfectant for Respirators - Kosto Alcohol-Free Individually Wrapped Respirator Cleaning Wipes – 100 Pack

SPI # : RNK003

Fall Protection



Shock-absorbing lanyards - SKYSAFE PRO FLEX ALU DOU LU DOUBLE 110 A 310 LBS

SPI # : L-0558-1.8



Safety Harness - Skylotec IGNITE PROTON WIND Ergonomic Work Positioning Harness

SPI # : G-1132-WS



Safety Harness - Petzl VOLT® WIND International Version Fall Arrest and Work Positioning Harness for the...

SPI # : C072DA



Other Fall Protection Accessories - Étui réglable pour radio/téléphone portable 3M™ DBI-SALA® avec attache à spirale...

SPI # : CAN127



Other Fall Protection Accessories - 3M™ Trauma suspension safety straps

SPI # : CSY003



Other Fall Protection Accessories - Kosto Trauma Straps for Safety Harness

SPI # : CSK011

Fall Protection



**Carabiners - Petzl Am'D
Lightweight Asymmetrical
Carabiner**

SPI #: CM0047

Hearing Protection



**Earplugs - 3M™ E-A-R™
UltraFit™ Reusable Coded
Earplugs with No-Roll Insertion**

SPI #: OBC027



**Earplugs - Honeywell Laser Lite®
Single-Use Uncoded Earplugs**

SPI #: OB0046



**Earplugs - 3M™ Neons E-A-Rsoft
Regular Uncoded Earplugs,
200/Box**

SPI #: OB008



**Earmuffs - 3M™ 98 Optime Peltor
Helmet Mounted Rigid Earmuffs
H9P3E**

SPI #: OCC010



**Earmuffs - 3M™ Peltor™ H7P3E
Optime Series 101 Helmet
Mounted Earmuffs**

SPI #: OCC030



**Earmuffs - SoundControl SH
Earmuff for Full Brim Hat**

SPI #: OCC085



**Earmuffs - 3M™ Earmuffs for
Versaflo Hard Hats,**

SPI #: RPR080

Road Safety



Road safety clothing - Kosto High-Visibility Polyester Surveyor's Vest

SPI # : SVK04



Road safety clothing - Kosto Breathable Polyester Traffic Vest with 4" Reflective Tape

SPI # : SVK05



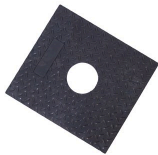
Road safety clothing - Emergency Flare with Stand

SPI # : SFU301



Barricade and Tapes - Tape Danger Red 2Mil #57004Ra1

SPI # : TH-57004RA1



Traffic Cones - Kosto Heavy-Duty Rubber Base for Delineators

SPI # : SBK010



Traffic Cones - Kosto High-Visibility Traffic Post with Reflective Bands

SPI # : SPK045

Lockout-Tagout



Lockout Tags - Label with inscription "Do not operate this equipment"

SPI # : EET031



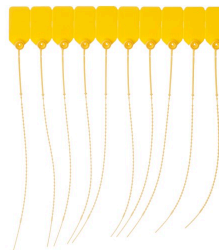
Lockout Devices and Bolt Covers - Master Lock 453L Oversized Plug & Control Cover

SPI # : XSA095



Lockout Tags - French OSHA Danger Safety Tag: Hors Service

SPI # : EET157



Lockout Devices and Bolt Covers - Dateless Bull's Eye Tamper Seals,

SPI # : RS-PT7

Lighting Products



Batteries - AA Alkaline 1.5 Volts Battery, 4/pkg

SPI #: QB-BAT-AA



Batteries - AAA Alkaline 1.5 Volts Battery, 4/pkg

SPI #: QB-BAT-AAA



Batteries - 9V Alkaline Battery

SPI #: QB-BAT9V

First Aid



Ice or Hot Pads - Dynamic Instant Cold Pack

SPI #: FCT008



First Aid Kits - Kosto First Aid Kit for the road

SPI #: FTR173

Other Protection Products



Other - 3M™ Heavy Duty Duct Tape

SPI #: XRU010



SAFE TO THRIVE

spi.com