



Confined Space
Descent and Rescue
Personal Fall Protection Equipment
Fall Protection Accessories



MSA has been in the business of safety at heights since 1930. Today we are at the forefront of innovation in fall protection products.

MSA are proud of our Fall Protection range and with the new Latchways, Gravity and V-Series range of height safety products we can assist you with all of your fall protection needs.

As part of a global business, MSA Pacific Asia has access to a complete range of product from facilities in North America, Mexico, China and Europe. This enables MSA Pacific Asia to carry stocks of the complete MSA Fall Protection range,

We stock a full range of anchorages, full body harnesses, connections and descent and rescue products to ensure workers at height have the protection they need at all times.

*Because every life has a **purpose...***

Fall Protection



OUR COMMITMENT TO YOU ...

The MSA Fall Protection Promise

MSA promises to replace any MSA harness and/or textile lanyard FREE of charge if a user falls while properly using our product.

If the fall occurs while using an MSA mechanical device, we will re-certify the device FREE of charge.

MSA believes that it is important to provide high quality products and recognize safe work practices.

Products should be returned with a signed copy of the accident report to:

MSA

Attn: Fall Protection Product Line Manager

11 Columbia Way

Baulkham Hills NSW 2153

MSA makes Fall Protection as easy as ABCD ensuring you have everything you need to work at height safely.

Anchorage:

Anchor points are an important part of any system. They should be suitably positioned for the intended operation and are required to be structurally sound.

Body support:

A full body harness with a front and rear fall arrest connection. You must select the harness applicable to your work application.

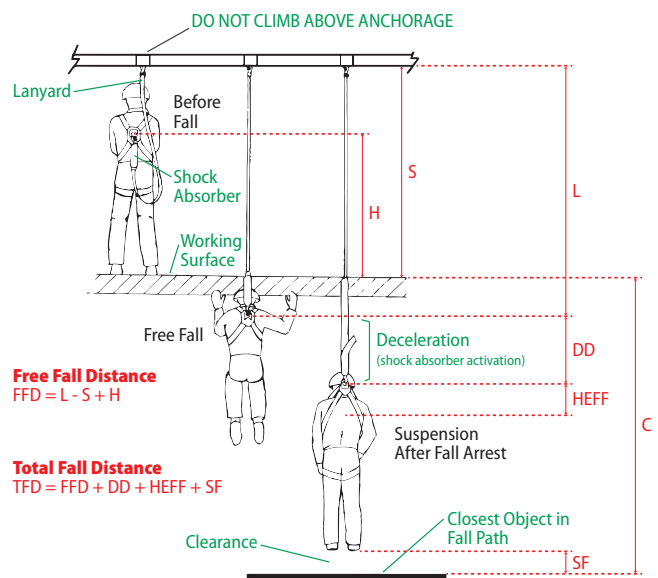
Connection means:

What is needed between the anchorage and harness? As a minimum, a shock absorbing lanyard assembly in either a single or twin leg assembly. Another alternative is to select a personal fall limiter or self retracting lanyard, which has the added benefit of reducing your free fall distance and increasing your mobility.

Descent & Rescue:

Typically the forgotten term in a PPE selection plan. Suspension trauma can occur in as little as 5 minutes after a person has fallen in a harness. Do not rely on local rescue authorities to be on site within 5 minutes. MSA has a range of simple to use rescue products to assist you in performing a quick, safe and successful rescue. We also offer a range of confined space equipment to assist you with your descent.

Fall Protection Distance Calculation for a Shock Absorbing Lanyard



Fall Definitions

As per the Australian & New Zealand Standard, AS/NZS 1891.4, there are four types of fall situations:

- **Restraint Technique** – When the person is not physically able to reach a position where a fall can occur due to a restraint lanyard between the anchor point and the harness
- **Restrained Fall** – When the person is using a pole strap whilst working on a pole
- **Limited Free Fall** – When the person is limited to a free fall distance of less than 600 mm
- **Free Fall** – When the person is exposed to a free fall distance of greater than 600 mm

In all cases, MSA recommends that the user wear a full body harness.

Calculating Total Fall Distance

Knowing how to calculate Total Fall Distance is just as important as selecting the proper harness, lanyard, anchorage connector and anchorage point for the specific task to be performed.

Total Fall Distance is the sum of the Free Fall Distance (FFD), Deceleration Distance (DD), Harness Effects (HEFF), and Vertical Elongation (VEL). It is also wise to include a Safety Factor (SF) of at least one metre into the formula. Total Fall Distance can be calculated using the following formula:

$$TFD = FFD + DD + HEFF + VEL + SF$$

Free Fall Distance (FFD) - The vertical distance a worker travels between the onset of a fall until just prior to the point where the fall arrest system begins to arrest the fall. For a shock absorbing lanyard, this can be calculated as the length of the lanyard “L”, minus the straight line distance between the anchor and the working surface “S”, plus the distance between the person’s lanyard attachment point and the working surface “H”. As per the AS/NZS 1891.4 standard, Free Fall Distance must not exceed 2 m.

$$FFD = L - S + H$$

Did you know this is where the true benefit of using a self retracting device, such as a self retracting lanyard (SRL) or personal fall limiter (PFL) comes into consideration, as your lifeline distance “L” will always be the minimum length required without restricting your mobility. Also to decrease your free fall distance always keep your anchor point as far above your attachment point on the harness as possible.

Deceleration Distance (DD) – The vertical distance a worker travels between the activation of the fall arrest system and the final fall arrest. For a shock absorbing lanyard the maximum distance permitted is 1.75 m, and for a self-retracting device, the maximum distance permitted is 0.7 m.

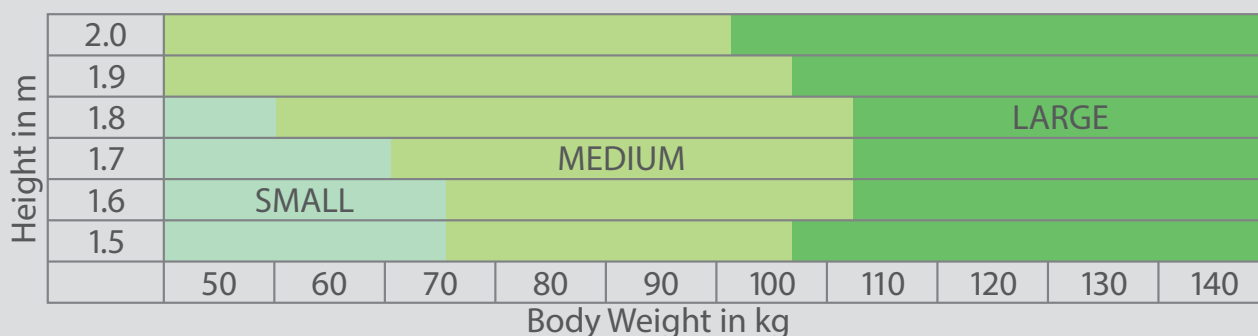
Harness Effects (HEFF) – The stretch in the harness during fall at rest. This can be estimated at approximately 0.3 m.

Vertical Elongation (VEL) – The stretch in the lifeline of the personal fall arrest system. Vertical elongation is measured on the part of the lifeline that is under tension during deceleration and final fall arrest. This variable will change drastically depending upon the type of fall arrest system you are using. For a shock absorbing lanyard or self retracting device, this is factored into DD, but for a rope grab system or horizontal lifeline, vertical elongation must be calculated based on the stretch on the vertical or horizontal lifelines in those systems.

Safety Factor (SF) – An additional factor of safety to ensure that you have required clearance below your working surface. We recommend a safety factor of 1 m.

Once you have calculated your Total Fall Distance you must ensure that your clearance between your working surface and the next closest object in the fall path is less than your calculated distance.

Harness Sizing Chart





The Safety Company



LATCHWAYS
FALL PROTECTION

MSA Latchways® Horizontal and Vertical Lifelines

Horizontal Lifelines (HLL)

MSA Latchways horizontal lifelines are known worldwide for their versatility and ease of use, making them the ideal choice for protecting workers as they go about day-to-day activities like maintenance, cleaning, inspection and more.

Easily customised for virtually any structure or unique requirement, MSA precisely engineered horizontal systems are built to work in all areas of industry, construction and maintenance. Installations include retail outlets, stadiums, transmission towers and industrial complexes.



Constant Force® Post

MSA has taken the science of Latchways Constant Force and applied it to the fall protection industry - providing an easy-to-install, reliable and cost-effective solution to rooftop safety.

Latchways Constant Force® post (CFP) does not need to be fixed to the building structure but instead top-fixes to the roof, therefore simplifying installation, saving time and protecting structures from compromise. With Constant Force technology as its governing principle, the load generated in the event of a fall is absorbed through the Latchways system, minimizing loads placed on the roof structure.

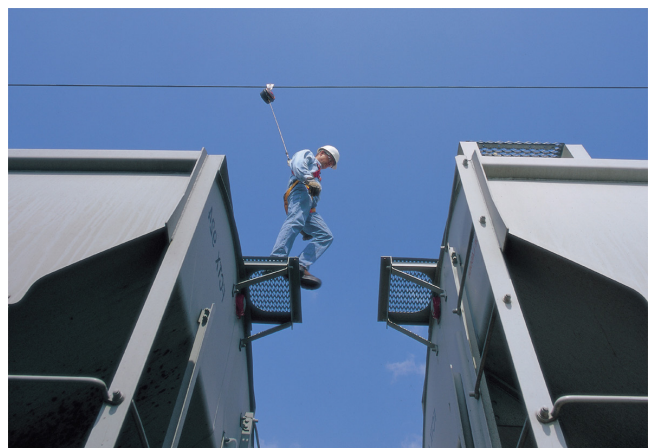


Overhead Systems

With MSA Latchways overhead systems, all you have to do is look up and you'll find a greater sense of security and confidence.

Combining MSA's unique knowledge of fall protection with innovative Constant Force technology, our overhead systems deliver maximum accessibility and hands free mobility - not to mention ease of use and simple installation.

The Latchways range of overhead systems house Constant Force technology in an in-line energy absorber, so if a worker connected to the system should fall, the Constant Force energy absorber controls the load back to the structure. Ideal for industrial environments and in applications such as warehouses, loading bays and airplane hangars.

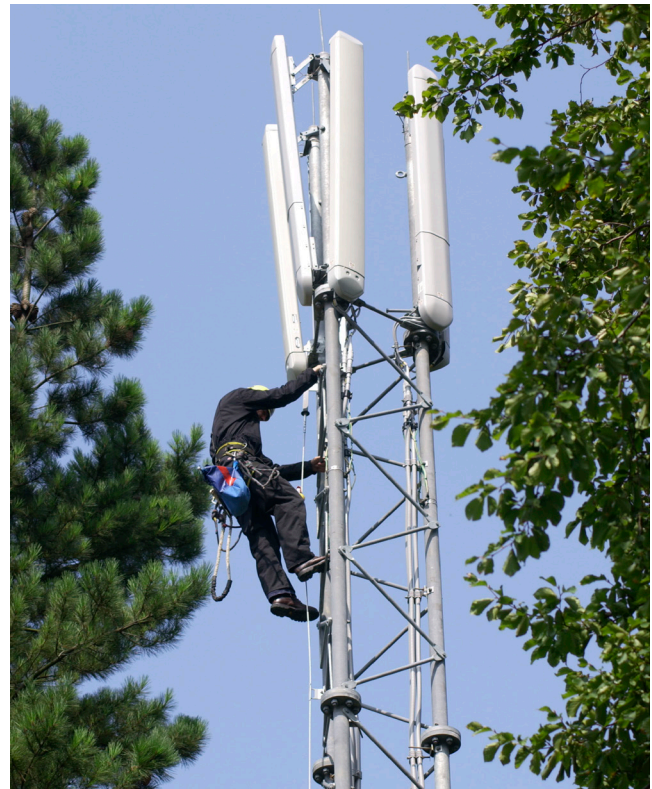


Vertical Lifelines (VLL)

Featuring our brilliantly engineered TowerLatch™ and LadderLatch™ systems the Latchways system options offer outstanding personal safety for those working at height, particularly in the telecom and wind energy industries. Both TowerLatch™ and LadderLatch™ emphasize inherent flexibility, meaning they can be configured for a wide variety of applications, including ladders, towers, masts, monopoles and other structures specific to these industries.

Dedicated to Safety

- **Reliable security:** Our VLLs incorporate a fluorescent red indicator that appears in the event of a fall.
- **Flexible freedom:** Each systems' universal attachment device rotates freely through intermediate cable guides for continuous hands-free protection.
- **Load control:** In the event of a fall, the load applied to the worker is limited to a maximum of 6 kN by either a Constant Force® absorber at the top of the system or a webbing energy absorber on the device.
- **Inspection:** TowerLatch™ and LadderLatch™ systems are regarded as part of the tower structure, and inspected accordingly.
- **Trusted quality:** Both systems meet or exceed all relevant international standards.
- **Extra security:** A webbing stop can be incorporated into the systems' attachment device to facilitate rescue as needed.



MSA Latchways® Inclined Systems

While working at height is tough, working at height on an incline can present uniquely different challenges. MSA has developed a comprehensive range of Latchways system components that can be configured to provide a tailored cable lifeline suited to structures that slope.

Our two main components, the BridgeLatch™ and ClimbLatch™ devices, are built to bring optimal security, flexibility and mobility to the at-height, on-incline workplace.

BridgeLatch™

For inclined lifelines running between 0° and 70°, the Latchways BridgeLatch™ device secures the user to the cable via a fixed-length lanyard connecting to the D-ring attachment point of a full-body harness. Featuring a starwheel mechanism that rotates freely over intermediate cable supports and brackets, this smartly engineered device eliminates the disconnection requirement that can lead to potential accidents. The BridgeLatch™ device is designed to clamp fast onto the cable, preventing the user from falling or sliding down the incline on which they're working.

ClimbLatch™

Like the BridgeLatch™ device, ClimbLatch™ permits hands-free travel up sloped surfaces freeing the worker to use both hands for work or climbing. Safety features include a required entry point on which to attach to the system. In the event of a fall, the ClimbLatch™ device locks onto the cable, not only arresting the fall but keeping the worker from sliding back down the system.



Attachment Devices

All MSA Latchways attachment devices are designed to connect the user, wearing a full-body harness, to a Latchways cable system.

Common to all devices is the patented starwheel mechanism, which rotates freely over intermediate cable supports and around corner brackets without needing to disconnect the unit. This allows hands-free operation for the system users.

Transfastener™ and Removable Transfastener

Universal device for use on all Latchways horizontal systems, suitable for both fall restraint and arrest systems.

Incorporates unique starwheel, allowing the unit to pass over cable supports and corners without the need to detach.

Connects to user at fall arrest attachment point via an energy-absorbing lanyard.

While the Transfastener requires a specific entry point, the Removable Transfastener can attach or detach at any safe point.



BridgeLatch™



ClimbLatch™

LadderLatch™ and TowerLatch™

- Universal device for use on all Latchways vertical systems
- Incorporates unique starwheel, allowing the unit to pass over cable supports without need to detach
- Anti-inversion mechanism prevents device from connecting to the cable upside-down
- Connects to user at chest point
- Able to attach or detach at any safe point of the system
- In the event of a fall, the unit locks onto the cable and arrests the fall



LadderLatch



TowerLatch with integral webbing strap to provide fast post-fall rescue



TowerLatch SP with an integral energy absorber ("shock pack") for use where a coil absorber is not present in the vertical lifeline system

Certified Installer Network

MSAs' Fall Protection offerings are supported by an expert network of trained installers. The installer network can assist with on-site hazard analysis, design, installation, certification, user training and on-going maintenance of engineered systems. Latchways systems can only be installed by trained and certified professionals.

Global Leaders in Fall Protection

Because we provide customized fall protection solutions all around the world with our range of Latchways® systems, MSA has a thorough understanding of any given country's safety concerns and needs. We have wide-ranging support, too, as our product leadership is backed by a worldwide network of highly trained registered installers and contractor companies.

And MSA is always thinking ahead—monitoring legislative developments around the world so that we can respond quickly with products and services designed to comply with new regulations without sacrificing productivity.

Simply put: MSA is fluent in the global language of fall protection.

No wonder our trusted systems and award-winning components can be found on structures as far away as Sydney's Harbour Bridge and as close by as Milwaukee's Miller Park Stadium.

Premium fall protection solutions tailored to your project needs

MSA is comprehensive in its care and concern for those working at height. Our versatile fall protection systems— from roof to tower—offer solutions for nearly every work environment. Our experience working with so many different industries, from aerospace to tourism, means we have thorough knowledge of the particular fall protection needs specific to a variety of applications.

So tell us what you're looking for. With our Latchways range of smartly engineered systems and best-quality products, you're in the hands of experts.

Commercial and Public Buildings

Imagine providing safe access without damaging roof integrity. Latchways horizontal and inclined systems, with their Constant Force® Posts, do just that. We created systems like WalkSafe® to help further reduce wear and tear and LadderLatch™ to keep workers safe as they climb new heights.

Transmission Towers, Distribution and Telecommunications

From towers to masts to monopoles, Latchways vertical systems can be seen protecting workers on transmission towers and distribution and telecommunication structures all over the world—even those in the most icy, rainy conditions.

Bridges and Infrastructure

Each bridge and infrastructure project has different fall protection requirements. Latchways inclined, horizontal and vertical systems deliver unprecedented versatility, making it safe for workers to maintain cables, traverse bridge undersides, or safely access towers—no matter how harsh the conditions.

Industrial Manufacturing

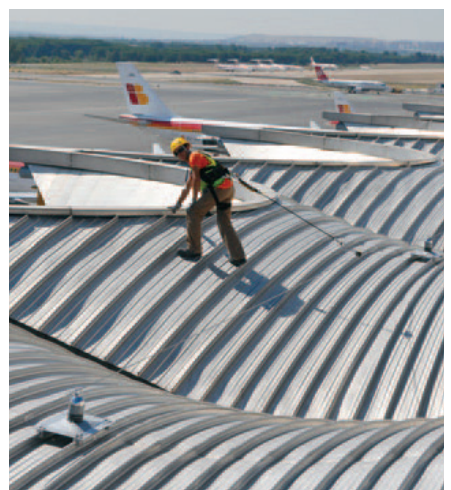
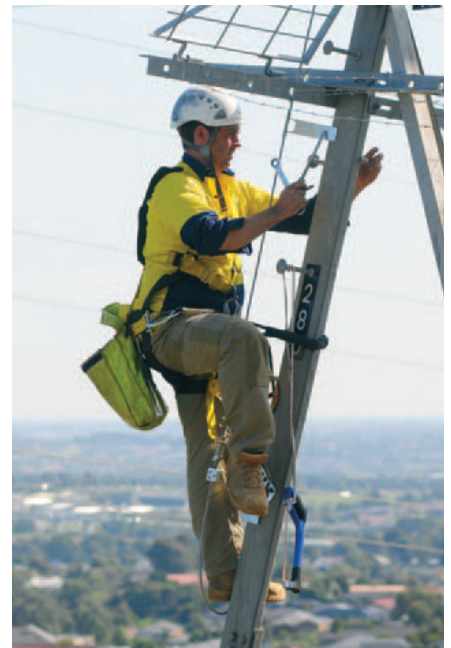
From overhead systems for above machinery operation to permanently installed lifelines, to temporary SRLs for one-off maintenance jobs, Latchways brings safety solutions to virtually any industrial manufacturing project. Our systems can link together horizontally, vertically and up inclines, and can be retrofitted or included as part of a new build.

Oil and Gas

Our range of user-friendly safety solutions, from Latchways Self-Retracting Lifelines to Latchways Personal Rescue Device®, meet the demands of the oil and gas industry—and then some. With vertical, horizontal and inclined cable systems designed to follow complex contours found on rigs, pipe racks, gantries and more, we bring fall protection to the most severe environments.

Wind Energy

From wind farm owners to maintenance contractors to global turbine manufacturers, wind energy professionals rely on innovations like our Latchways Sealed Self-Retracting Lifeline for safety and our TowerLatch™ unit for uninterrupted ladder ascension.



Confined Space Entry Kits

Confined Space Kits come complete with all the essentials required for a safe entry, exit and retrieval from a confined space. Intuitively designed, the MSA range of products minimises extensive user training and setup time by being simple, easy to use and fast to assemble. Kits come standard with a V-FORM™ Standard Full-Body Harness, MSA Tripod, duffel bag and spreader bar.

Kits include all components required for assembly.

Confined Space Entry Kit with MSA Winch and MSA Rescuer

PART NO.	8'Tripod	15m MSA Rescuer	20m MSA Winch	Pulleys	Karabiners	V-FORM™ Standard Full-Body Harness	MSA Spreader Bar	MSA Tripod Duffel Bag
768392	■	■	■	2	2	■	■	■

Confined Space Entry Kits with Rescue Safe Retrieval System

PART NO.	8'Tripod	Rescue Safe Retrieval Rope Kit 3:1, 15M Travel	Rescue Safe Retrieval Rope Kit 4:1, 15M Travel	V-FORM™ Standard Full-Body Harness	MSA Spreader Bar	MSA Tripod Duffel Bag
767790	■	■		■	■	■
767791	■		■	■	■	■

Confined Space Entry Kit with MSA Winch

PART NO.	8'Tripod	20m MSA Winch	30m MSA Winch	Pulleys	Karabiners	V-FORM™ Standard Full-Body Harness	MSA Spreader Bar	MSA Tripod Duffel Bag
767939	■	■		1	2	■	■	■
768017	■		■	1	2	■	■	■

Confined Space Entry Kit with MSA Rescuer

PART NO.	8'Tripod	15m MSA Rescuer	Pulleys	Karabiners	V-FORM™ Standard Full Body Harness	MSA Spreader Bar	MSA Tripod Duffel Bag
768384	■	■	1	2	■	■	■



Confined Space Entry Kit Components



Confined Space Anchorages

MSA Tripod

MSA Tripods make confined space entry with vertical descent easy. The MSA Tripod features internal leg-locking mechanism, maximum height indicator on the tripod legs, cut-resistant leg pin, retention chains, recessed product labels, reduced weight and integral carrying strap. The MSA Tripod can be set up and dismantled without the use of tools.

- Automatic hinge lock legs with incremental adjustment
- Skid resistant feet
- Tripod head features four separate attachment points
- Accessories can attach to any leg for faster setup
- Telescoping legs up to 2.44m (8 ft) high do not tangle when unit is collapsed for easier transportation and storage

PART NO:	Description
10102002	MSA Tripod
10169369	Duffel Bag
10105612	Replacement Leg Support Strap



MSA Tripod
Duffel Bag

Descent and Rescue

Rope Rescue Systems

Rescue Safe Retrieval System



PART NO:	Description
10156630	3:1 Ratio, 15.0M Travel
10156631	3:1 Ratio, 20.0M Travel
10156632	3:1 Ratio, 30.0M Travel
10156636	4:1 Ratio, 15.0M Travel
10156637	4:1 Ratio, 20.0M Travel
10156634	4:1 Ratio, 30.0M Travel

- The Rescue Safe Retrieval System is primarily used for raising and lowering people or equipment in rescue and industrial work access and confined space applications
- It also doubles as a work positioning system featuring an overspeed locking brake to position the user into place
- Hand ascender included for aiding the operation and acts as a fail-safe brake
- Includes an anchor strap and two karabiners
- Offered as a 3:1 or 4:1 mechanical advantage system

Rescue Utility System



PART NO:	Description
SRS15200	15m
SRS15300	25m

- The Rescue Utility System is primarily used for raising and lowering people or equipment in rescue and industrial work access and confined space applications
- Pulleys are equipped with a built-in anti-reversing lock
- Offers rapid deployment, is virtually maintenance free, and is rated for two-person load
- Compact and lightweight with a standard system weight of 7.7 kg
- Rated capacity of 272 kg for personnel and materials
- Offered as a 4:1 mechanical advantage system with hand ascender included

Confined Space Equipment

MSA Winch



- The MSA Winch is a rugged, versatile and economical choice for lifting, lowering and positioning of personnel and materials within confined space applications
- Integral bracket design allows assembly onto the MSA Tripod in less than 50 seconds using the existing tripod leg pins - no extra tools required for assembly
- Designed for a maximum 140kg workload for personnel and 225kg for materials
- The tough thermoplastic housing ensures high performance in the harshest environments
- Offers an integral and ergonomic carry grip with a unique, foldable crank handle for simple storage inside the included carry bag
- Level wind mechanism for a tangle-free cable drum
- Built in shock absorber and double braking system
- Compatible with MSA Tripod (Split mount pulley to be ordered separately PN: 506222)
- RFID-enabled product for simplified product tracking and inspection
- Certified to EN1496 Class B

PART NO:	Description
10147296	20.0M, Stainless Steel Cable
10154688	30.0M, Stainless Steel Cable
10147986	Replacement Carry Bag

MSA Rescuer



- MSA Rescuer provides fast, easy and intuitive fall protection with integral bi-directional retrieval capability. Not only does the MSA Rescuer arrest the fall, its retrieval capability allows the fallen worker to ascend or descend to a safe location. This durable, economical addition to the MSA Series of products offers fast installation and setup, ideal for applications where time and ease of use are a priority. The MSA Rescuer is also a stand-alone retractable device, as the carrying handle may be used as an anchorage attachment.
- User capacity up to 140 kg for personnel
 - Stainless steel 3/16" wire rope
 - Integral mounting bracket
 - Colour-coded switch for retrieval mechanism activation
 - Ergonomic, stainless steel carry handle can also be used as anchorage connection point
 - Built in shock absorber
 - Robust aluminium housing with thermoplastic bumpers
 - Self-locking swivel snaphook with load indicator
 - Stow-able, foldable crank handle
 - RFID-enabled
 - Certified to EN 360, complies with AS/NZS 1891.3

PART NO:	Description
10158192	MSA Rescuer, Stainless Steel Cable, 15m
10161374	Replacement Carry Case

Descent and Rescue

Pulleys



The pulley is compatible with the MSA Tripod to facilitate the use of the MSA Winch and MSA Rescuer.

PART NO:	Description
506222	Split Mount Pulley for to Tripod/Davit Arm

Descent Accessories

Spreader Bars



- MSA Spreader Bars are the ideal harness accessory for personnel descent and retrieval via the harnesses shoulder loops
- Available with steel or aluminium snaphooks

PART NO:	Description
10112910	Snaphook, Steel

Rescue Equipment

Pole Top Rescue Kit



- The Anthron Descender is a manually operated, controlled descent device most commonly used for suspended, work positioning, self-evacuation, or rescue operations
- A cam assembly provides friction on the rope to hold a load or allow the load to descend at a controlled rate
- The system consists of 11mm kernmantle rope, the Anthron Descender an anchor strap and carry bag
- Proper roping and rigging diagrams are on the side of the Anthron device, which can be installed or removed at any point on the rope and has a working load of 136 kg
- Can also be inverted so that the device can be attached to an approved anchor, and the rope end attached to an injured worker. In this orientation, the injured worker can be lowered while being controlled by a rescuer

PART NO:	Description
10157587	15.0M Kernmantle Rope Length
10157588	25.0M Kernmantle Rope Length

Other lengths available on request

MSA Latchways Personal Rescue Device® (PRD®)



The Need for a Rescue Plan

There is a legal obligation to have a full and comprehensive rescue plan in place when individuals are working at height

The Latchways PRD range

The Latchways PRD range now also includes the Workman Premier Harness

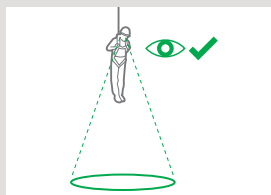
MSA has revolutionized the rescue process with the development of the Latchways PRD – an integrated harness system allowing self-rescue. The lightweight, unobtrusive rescue device is contained in a small ‘backpack’ attached to a full body harness and is designed to be used in conjunction with a fall protection system or anchor point.

In the event of a fall the Latchways PRD harness suspends the user and then allows a gentle lowering to the ground in a controlled descent. The device features a 20 m spool of Aramid rope which is released at a controlled rate through an integral braking mechanism. The innovative design uses quality components and a limited number of moving parts to enable 100 % mechanical integrity.



Latchways PRD
Workman Premier
Full-body Harness

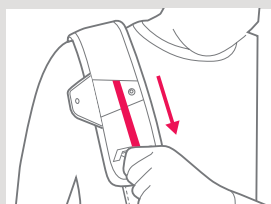
User Instructions



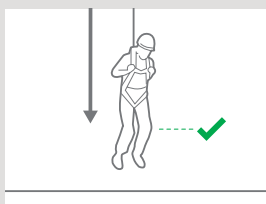
① Check the ground below to ensure descent path is clear and a safe landing is possible.



② Open the flap on the right shoulder strap to access the release cord.



③ Pull sharply on the release cord.



④ Prepare for landing by bending knees.

Key facts

Descent Height: 20 m

Complete Weight

Workman Premier Harness: 1.3 kg

PRD rescue device: 2.6 kg

User Weight: 59–140 kg

Descent Speed: 0.5–2 m per second

Secondary Release Mechanism: Should the user not be able to rescue themselves, the device can be activated by a third party

Component Parts: Descent line made from Aramid rope (UHMwPE rope with Aramid overbraid)

Training: Minimal user training required – no annual user refresher training required

Maintenance: Periodic examination limited to a series of visual inspections carried out by a competent person (full instructions provided)

Ordering Information

PRD with Workman Premier Harness	Small	Medium	Large
Workman Premier, Bayonet leg straps	68216-00S	68216-00M	68216-00L

Rescue Pole/Remote Hook



- The Rescue Pole/Remote Hook is designed as a rescue tool for the retrieval of a worker suspended in a fall arrest system or for remote rescue access
- In most cases, the need for the rescuer to go to the fallen worker (victim) is limited with this system
- The Rescue Pole can be used in a wide variety of rescue applications and will serve as an excellent tool to help perform a safer more efficient rescue
- Packaged together in a kit which includes the extension pole, remote hook, pole adaptor and storage bag

PART NO:	Description
228228-3.6	Kit, 1.8 - 3.6M Extension Pole
228228-7.3	Kit, 2.4 - 7.3M Extension Pole
SFP675009	1.8M - 3.6M, Adjustable Extension Pole
SFP675012	2.4M - 7.3M, Adjustable Extension Pole
SRCA401	Remote Hook, Aluminium with Web Sling
SCE109001	Pole Adaptor, Aluminium & Rubber
SCE109003	Pole Adaptor, 1.8M Extension, Aluminium & Rubber
SRB675009	Storage Bag for SFP675009

Latchways® R20 Rescue Pole



- The Latchways® R20 Rescue Pole is an ideal compact solution to facilitate a remote access rescue.
- Telescoping pole is constructed from Fibre Reinforced Plastic (FRP) and allows remote reach extension from 800mm to 3400mm.
- Suitable for use with Rope Rescue Systems to execute a simple rescue plan quickly.
- Comes standard with a durable storage bag.

PART NO:	Description
68099-00	Latchways® R20 Rescue Pole

Fall Protection Equipment

V-FORM™ Full-Body Harness NEW

Certified to AS/NZS 1891.1:2020.



1. Superior Comfort

The racing style quick connect buckle allows for a close, comfortable harness fit—eliminating the need for bulky chest straps or cumbersome buckles.

2. Increased Flexibility

The racing style quick connect buckle creates an athletic cut, contouring the harness to the body and improving upper torso movement on the job.

3. Adjustability

Pull-down adjustment allows you to quickly and easily get the right fit that lasts throughout the work day.

4. Ease of Use

New hex style stitch pattern make finding broken threads easy when inspecting the harness.



V-FORM, Steel Hardware, Back & Chest D-Ring, Shoulder Loop, Qwik-Fit buckles
(P/N 10205379/10205380/10205381)



V-FORM, Steel Hardware, Back & Chest & Hip D-Ring, Shoulder Loop, Qwik-Fit buckles
(P/N 10205385/10205386/10205387)

Ordering Information

Part Number:	Description	D-Ring Configuration	Size			Leg Buckle Type	Waist Belt	Shoulder Loop	Certification
			SM	MD	LG				
10205379	Harness, V-Form, SM, Green Color, Steel Hardware, Back&Chest D-Ring, Shoulder Loop, Quick-Fit Buckle, AS/NZS Version	Back, Chest	■			Qwik-Fit		■	AS/NZS 1891.1:2020
10205380	Harness, V-Form, MD, Green Color, Steel Hardware, Back&Chest D-Ring, Shoulder Loop, Quick-Fit Buckle, AS/NZS Version	Back, Chest		■		Qwik-Fit		■	
10205381	Harness, V-Form, LG, Green Color, Steel Hardware, Back&Chest D-Ring, Shoulder Loop, Quick-Fit Buckle, AS/NZS Version	Back, Chest			■	Qwik-Fit		■	
10205385	Harness, V-Form, SM, Green Color, Steel Hardware, Back&Chest&Hip D-Ring, Shoulder Loop, Quick-Fit Buckle, AS/NZS Version	Back, Chest, Hips	■			Qwik-Fit	■	■	
10205386	Harness, V-Form, MD, Green Color, Steel Hardware, Back&Chest&Hip D-Ring, Shoulder Loop, Quick-Fit Buckle, AS/NZS Version	Back, Chest, Hips		■		Qwik-Fit	■	■	
10205387	Harness, V-Form, LG, Green Color, Steel Hardware, Back&Chest&Hip D-Ring, Shoulder Loop, Quick-Fit Buckle, AS/NZS Version	Back, Chest, Hips			■	Qwik-Fit	■	■	

V-FIT™ Full-Body Harness

NEW

Certified to AS/NZS 1891.1:2020.



V-FIT, BACK & CHEST D-RING, SHOULDER LOOP, SHOULDER & LEG PADDING, QUICK CONNECT
(P/N 10217158/10217159/10217160)



V-FIT, BACK & CHEST & HIP D-RING, SHOULDER LOOP, WAIST BELT, SHOULDER & LEG PADDING, QUICK CONNECT

(P/N 10217181/10217182/10217183)



Superior Comfort

1. Using a patent-pending RaceFLEX™ connection with an integrated D-Ring, webbing is routed across the chest for a secure and comfortable fit, eliminating the need for bulky chest strap or cumbersome buckles.
2. Shoulder padding responds to your movement to conform to your body, eliminating pressure points and chafing. Shoulder padding is breathable and can be removed for cleaning, extending the life of the harness.
3. Patented leg strap design keeps leg straps in place as webbing lays horizontally across the thighs, creating a more natural fit.



Flexibility

4. The RaceFLEX™ Buckle creates an athletic cut contouring the harness to the body and improving upper torso movement on the job.



Adjustability

5. Pull-down adjustment allows you to quickly and easily get the right fit that lasts throughout the work day.
6. Dedicated attachment point for Personal Fall Limiter allows for quick and easy attachment and keeps your back D-ring free for other use.



Ease of Use

7. New Hex style stitch patterns make finding broken threads easy when inspecting the harness.



Coated Webbing

8. NanoSphere webbing coating uses nanotechnology to repel dirt, grease, moisture and water.

V-FIT Construction Harness Adjustable Waist Pad

The V-FIT Harness' adjustable waist pad allows you to position the waist pad specifically for you and your work day. With its patent pending design. The V-FIT waist pad can be adjusted higher on your torso for lumbar support or lower for work positioning applications. Designed around pressure points and by choosing breathable materials, the V-FIT waist pad delivers ultimate on-the-job comfort.



Waist Pad front side with Quick Connect Buckle

Ordering Information

Part Number	D-Ring Configuration		Leg Buckle	Waist Belt	Shoulder Loop	Certification
	Back & Chest	Back, Chest & Hip	Quick Connect			
10217158	■		■		■	AS/NZS 1891.1:2020
10217159	■		■		■	
10217160	■		■		■	
10217181		■	■	■	■	
10217182		■	■	■	■	
10217183		■	■	■	■	

V-FLEX™ Full-Body Harness



Certified to AS/NZS 1891.1:2020.



V-FLEX, Back&Chest D-Ring, Quick Connect
PN 10211356/57/ 58



V-FLEX, Back&Chest&Hip D-Ring, Waist Belt,
Quick Connect
PN 10211360/61/62



Superior Comfort

1. Using a patent-pending RaceFLEX™ connection with an integrated D-Ring, webbing is routed across the chest for a secure and comfortable fit, eliminating the need for bulky chest strap or cumbersome buckles.
2. Reduce fatigue and heat stress with a breathable, contoured pad material that conforms to the shape of your shoulders to increase comfort.
3. Keep cool and reduce heat stress with interior padding designed with channels for continuous air flow and ventilation.

Increased Mobility

4. The exclusive racing style design, webbing contours to the torso, reducing the need for re-adjustment and allowing to get better mobility.
5. Featuring a hip connection that 'flexes' with the worker. Reducing fatigue during usage.



Adjustability

6. Pull down adjustment allows you to quickly and easily get the right fit that lasts throughout the work day.



Ease of Use

7. Unique, identifiable Hex stitch pattern, along with fewer stitch points, saves time during pre-use inspection process.



Coated Webbing

8. NanoSphere webbing coating uses nanotechnology treatment to repel dirt, grease, moisture and water.

Ordering Information

Part Number:	D-Ring Configuration	Sizes			Leg Buckle Type	Waist Belt	AS/NZS 1891.1:2020
		SM	STD	LG			
10211356	Back, Chest	■			Quick Connect		■
10211357	Back, Chest		■		Quick Connect		■
10211358	Back, Chest			■	Quick Connect		■
10211360	Back, Chest, Hips	■			Quick Connect	■	■
10211361	Back, Chest, Hips		■		Quick Connect	■	■
10211362	Back, Chest, Hips			■	Quick Connect	■	■

V-FORM™ Roof Workers Kit



- V-FORM Body Harness
- Screw gate karabiner
- Anchor sling, 1.5m
- Vertical lifeline 11mm, 15m
- Backpack

PART NO:	Description
768703-15	Kit, Roof Workers w/ V-FORM, 15M Kernmantel Rope
768703-30	Kit, Roof Workers w/ V-FORM, 30M Kernmantel Rope

V-FORM™ Deluxe Roof Workers Kit



- V-FORM Body Harness
- Screw gate karabiner
- Anchor sling, 1.5m
- Vertical lifeline 11mm, 15m
- Backpack
- Shock Pack, Single Steel Snaphook
- Suspension Trauma Safety Step

PART NO:	Description
768702-20	Kit, Deluxe Roof Workers w/ V-FORM, 20M Kernmantel Rope

Gravity® Harness

MSA's Gravity® range of harnesses provide a superior mix of style, quality and versatility. Premium features and advanced comfort are at the essence of our newly introduced Gravity® line of products.

Gravity® Suspension Harness

The MSA **Gravity® Suspension Harness** is designed to offer superior comfort, safety and quality to professionals and specialists who work at heights suspended.



Product Highlights:

- Strategically positioned ventral attachment distributes the load between the waist belt and leg loops during suspension.
- The breathable waist pad is constructed from a multi-layered padding which dissipates pressure from the webbing to reduce fatigue when working for long periods of time.
- Bayonet buckles with locking engagement window confirms a secure connection.
- Shoulder padding protects the neck from chafing while providing the necessary back support.
- Premium hardware fittings with wide opening aluminium D-Rings, triple action karabiner and single hand adjusting buckles.
- A total of five rigid tool loops on the waist belt and leg connections.
- Side D-Rings can be conveniently stowed away when not in use.
- RFID enabled for easy tracking.
- Available in 3 sizes.

Applications:

- Rope Access, Rescue, Telecommunications, Oil and Gas, Wind Energy, General Industry



Gravity®

Features and Benefits

High density foam

- Provides necessary back support for work position or sitting while suspended

Aluminium hardware

- Weight reduction

Ventral attachment point positioned at the waist

- Distributes the load between the waist belt and the leg loops during suspended work

Front D-Rings capable of accommodating three carabiners

- Connection transfer and hardware storage

Bayonet buckles with locking undercut engagement window

- Quick connection
- Confirm secure connection
- Prevents disconnection under tension

Adjustable padded leg loops

- More adjustment for optional fit
- Comfort

Quick adjusting buckles

- One hand tightening and loosening capability

Side D-Rings that fold forward

- Ability to stow side D-rings when not in use

Triple locking karabiner

- Added peace of mind

Five rigid tool loops on the waist and leg connections

- Keep multiple tools and connectors attached and safe while working at height

Lanyard keepers

- Stow unused twin leg lanyards

PART NO:	Description	Size			Approvals
		S	M	L	
10150462	GRAVITY® Suspension Harness	■			AS/NZS 1891.1:2020
10150463	GRAVITY® Suspension Harness		■		
10150464	GRAVITY® Suspension Harness			■	

Gravity® Miners Harness and Belts

Gravity® Miners Harness and Belts

NEW



The Gravity® Miners Harness and Belt range has been designed specifically for the mining industry. Harsh environmental conditions and unique hazards demand working at heights fall protection and utility belts that are durable, long lasting and multi-functional.

This premium designed range is constructed using stainless steel buckles and adjusters ensuring longer product life in corrosive environments. The equipment belt provides an ergonomic solution for storage of Self Rescuer, such as MSA's SSR 30/100 or SavOx and even your I.D. Tags!

Available in three configurations in small, medium and large sizes

- Gravity® Basic Miners Harness **NEW**
- Gravity® Miners Harness
- Gravity® Miners Belt
- Gravity® Miners Belt with Shoulder Braces

Gravity® Miners Harness is certified to AS/NZS 1891.1:2020




Description	PART NO.	SIZE		
		S	M	L
GRAVITY® BASIC MINERS HARNESS	10226271	■		
	10226272		■	
	10226273			■
GRAVITY® MINERS HARNESS WITH EQUIPMENT BELT	10158704	■		
	10158703		■	
	10158702			■
GRAVITY® MINERS BELT	10158657	■		
	10158656		■	
	10158655			■
GRAVITY® MINERS BELT WITH BRACES	10158661	■		
	10158660		■	
	10158659			■

Connection **Means**

V-Series Lanyards

Complex Worksites. Simplified Solutions.

The V-Series Lanyard line simplifies product selection by offering a concise line of lanyards that meet a wide range of customer's needs. Reduce snag and trip hazards and increase worker flexibility with the stretch style webbing. Abrasion resistant cover for the energy absorber provides additional protection for increased service life. All Stretch lanyard can be easily identified by the icon  on the energy absorber cover. MSA also offering the Standard Adjustable Lanyard with Energy Absorbing to complete our new V-Series Lanyard product line.



Energy Absorber Cover
(Standard & Stretch Lanyard)



10208073



10208074



10208076



10208077



10208078

Technical Data Sheet

CAPACITY	140 Kg
BRAND	MSA
SUB BRAND / MODEL NAME	V-SERIES Standard Energy-Absorbing Lanyard
	V-SERIES Stretch Energy-Absorbing Lanyard
THREAD/ STITCHING	Polyester
WEB MATERIAL	Polyester
SNAPHOOK MATERIAL	Steel (Standard Lanyard) & Aluminum (Stretch Lanyard)
PRODUCT WEIGHT	1.15 – 2.33 kg (Standard Adjustable Lanyard); 1.19 – 1.87 kg (Stretch Lanyard)
SHIPPING WEIGHT	1.2 – 2.39 kg (Standard Adjustable Lanyard); 1.25 – 1.93 kg (Stretch Lanyard)
SHIPPING DIMENSIONS	0.44 x 0.34 x 0.06 M
PRODUCT STYLES	Single & Twin, Adjustable, Stretch
STANDARDS	AS 1891.5:2020

V-Series Energy Absorbing Lanyard

The V-Series Adjustable Rope Lanyard is the newest addition to the MSA V-Series Lanyard range. These lanyards are ideal for restraint applications with the integral rope adjuster allowing the end user to keep the lanyard line taught to their anchor point at all times, restricting the possibility of a free-fall. The energy absorber will ensure the maximum force experienced by the user in the event of a fall will not exceed 6kN. Made from durable kernmantle rope, with an abrasion resistant cover over the energy absorber - this lanyard is ideal for industrial applications. Available in both Single-Leg and Twin-Leg versions with triple action karabiner connectors.



10223507



10223508

Technical Data Sheet

CAPACITY	140 Kg
BRAND	MSA
SUB BRAND / MODEL NAME	V-SERIES Adjustable Energy-Absorbing Rope Lanyard
THREAD/ STITCHING	Polyester
ROPE MATERIAL	Nylon(core)+ Polyester (sheath)
CARABINER MATERIAL	TAK Stainless steel
PRODUCT WEIGHT	1.3- 2.2 kg
SHIPPING WEIGHT	12.00 -15.00 kg
SHIPPING DIMENSIONS	38*38*36cm (Carton)
PRODUCT STYLES	Single & Twin, Adjustable, Rope
STANDARDS	AS/NZS 1891.5:2020

V-Series Lanyard Ordering Information

PART NUMBER	DESCRIPTION	TYPE		WEBBING		LENGTH MAX.	SNAPHOOK (STEEL)	SCAFFOLD HOOK (STEEL)	SNAPHOOK (AL)	SCAFFOLD HOOK (AL)	TRIPLE ACTION KARABINER	AS 1891.5:2020
		Single	Twin	Standard Adjustable	Stretch							
10208073	V-SERIES Energy Absorbing Lanyard, Standard Adjustable 2.0M, Steel Snaphook, Single Leg Webbing, AS	■		■		2M	■					■
10208074	V-SERIES Energy Absorbing Lanyard, Standard Adjustable 2.0M, Steel Snaphook & Scaffolding, Single Leg Webbing, AS	■		■		2M	■	■				■
10208076	V-SERIES Energy Absorbing Lanyard, Standard Adjustable 2.0M, Steel Snaphook & Scaffolding, Twin Leg Webbing, AS		■	■		2M	■	■				■
10208077	V-SERIES Energy Absorbing Lanyard, Standard Adjustable 2.0M, Aluminium Snaphook & Scaffolding, Single Leg Webbing, AS	■			■	2M			■	■		■
10208078	V-SERIES Energy Absorbing Lanyard, Standard Adjustable 2.0M, Aluminium Snaphook & Scaffolding, Twin Leg Webbing, AS		■		■	2M			■	■		■
10223507	Single Leg Shock Absorbing Adjustable Rope Lanyard, 2.0M,	■				2M					■	■
10223508	Twin Leg Shock Absorbing Adjustable Rope Lanyard, 2.0M,		■			2M					■	■

Note: While uses and performance capabilities are described, under no circumstances shall the products be used by untrained or unqualified individuals and not until the product instructions including any warnings or cautions provided have been thoroughly read and understood. Only they contain the complete and detailed information concerning proper use and care of these products.

Restraint Lanyards & Lifelines

- To be used as part of a restraint technique, preventing the user from reaching a position where a fall is possible.



Pole Straps

- Ideal for workers on a pole or structure needing restrained fall arrest positioning.
- Heavy duty 44mm polyester webbing and protective outer sheath.
- Easy webbing length adjuster.
- Certified to AS 1891.5:2020.



PART NO:	Description	Material	Fixed or Adjustable	Length (m)	Connections
10112986	Restraint Lanyard	Kernmantle	Fixed	2	Aluminium Karabiner
10157107	Restraint Lifeline with built-in manual rope grab	Kernmantle	Adjustable	10	Snaphook
10157108	Restraint Lifeline with built-in manual rope grab	Kernmantle	Adjustable	15	Snaphook
10157109	Restraint Lifeline with built-in manual rope grab	Kernmantle	Adjustable	20	Snaphook
10157110	Restraint Lifeline with built-in manual rope grab	Kernmantle	Adjustable	25	Snaphook
10157100	Pole Strap	Web	Adjustable	2	Steel Snaphook
10157101	Pole Strap	Web	Adjustable	2.5	Steel Snaphook
10157102	Pole Strap	Web	Adjustable	3	Steel Snaphook

Anchorage

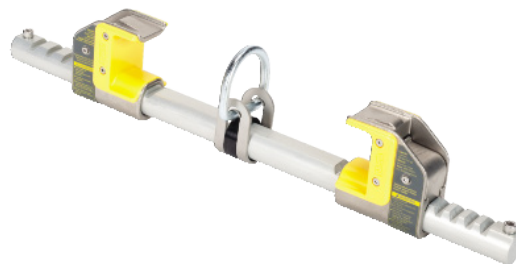
Webbing Anchor Straps and Slings



- Webbing anchor slings and straps provide an economical and portable anchorage system
- Slings provide a closed loop webbing configuration, where the straps provide a protective sleeve with loop through or coupled D-ring configuration
- Complies with AS/NZS 1891.4:2009

PART NO:	Description
10112987	1.5M, Anchor Sling
10112988	2.0M, Anchor Sling
10157103	1.0M, Anchor Strap
10157104	1.5M, Anchor Strap
10157105	2.0M, Anchor Strap

Workman® FP Stryder



- The MSA FP Stryder is a portable beam grip that is an approved anchorage connection when installed on a beam flange
- Low friction Teflon wear plates allow the Stryder to glide effortlessly along the beam
- Vernier push button adjustability ensures secure fit and can be adjusted with one hand – no extra tools required
- Integral load indicator shows if the Stryder has been subject to a fall
- Lightweight design - PN: 10144431 (2.3kg) and PN: 10144432 (5.4kg)
- Mounting can be overhead or at workers foot level
- Two versions offered to suit different beam flange sizes
- 182kg working capacity and rated to 22.2kN
- Complies with AS/NZS 1891.4:2009

PART NO:	Description
10144431	4"-13.5" Beam
10144432	14"-23.5" Beam

D-Plate Anchorage Connector



- Provides a permanent anchorage point
- Rated to 22.2kN
- Bolts to beams or columns
- Also available with 8" x 8" back plate made of black anodised aluminium for attachment to concrete walls
- Complies with AS/NZS 1891.4:2009

PART NO:	Description
506632	D-Plate

Bolt D Ring Anchorage Connector



- Provides permanent anchorage point
- Designed for horizontal installation
- Rated to 22.2kN
- Bolts to beams or girders
- Uses single 5/8" Grade 8 bolt (not supplied)
- Complies with AS/NZS 1891.4:2009

PART NO:	Description
10003213	Bolt D Ring

RailSlider®



Anchorage rated connector for use on a railroad

PART NO:	Description
228251	Rail Slider®

Ballantyne T-Bar Anchor and Tether Plates



- The T-Bar anchor is to be used on roofs constructed with metal sheeting with a minimum base metal thickness of 0.42 mm
- To be installed on the opposite side of the roof from where the user is working
- Direct connection of personal fall arrest rated equipment for a single person
- The anchor is designed and tested to 15kN and is therefore rated as a single person fall arrest anchor under AS/NZS 1891.4:2009
- The Tether Plates (Claw) are available in two sizes - 280mm and 500mm.
- The Tether Plates act as a diversion point when using a restraint lanyard and also eliminates the pendulum effect (swing during fall), when installed and used correctly
- Can be used as a standalone anchor point on metal roof sheeting

PART NO:	Description
767345	T-Bar Roof Anchor
767346	T-Bar Tether Plate, 280mm
767347	T-Bar Tether Plate, 500mm

Latchways® Free Standing Constant Force® Post System



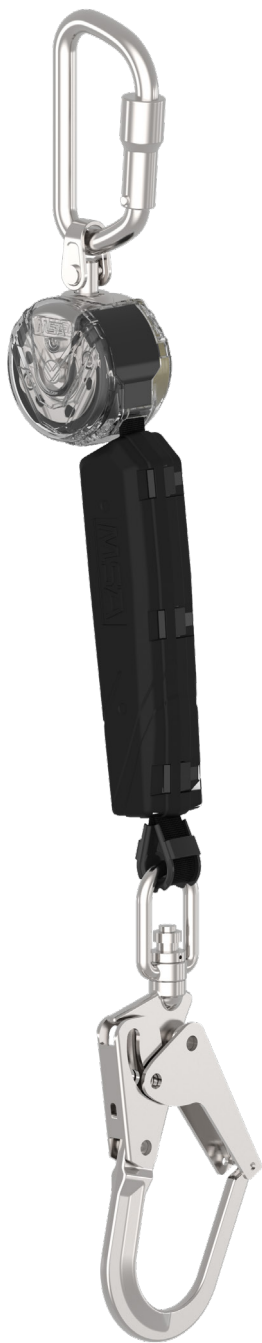
The Latchways® Freestanding Constant Force® post provides assured worker safety at height where there is an occasional or temporary requirement to access flat roofs or structures.

At the heart of the system is Latchways' unique **Constant Force technology**. The Constant Force post is contained within an anchor device consisting of a galvanised steel frame and galvanised steel weights bolted in a circular formation onto rubber coated base weights. In the event of a fall, the Constant Force post deploys to limit the load on the system while the weights simultaneously create a friction anchor between the unit and the roof surface.

- Applicable where there is an occasional safety at height requirement.
- Suitable for flat roofs (maximum 5° pitch).
- Can be used on a wide range of roof surfaces including concrete, single-ply membrane, bituminous membrane, sanded and stone chipping asphalt, and steel profile.
- No need to puncture the roof membrane to fix the system.
- Special rotating anchor turns through 90° for maximum user flexibility.
- Each anchor device protects a single user.
- Conforms to BS EN 795 class E.

PART NO:	Description
65643-00	Free Standing Constant Force Free Post 200kg
65640-00	Free Standing Constant Force Free Post 300kg
65644-00	Free Standing Constant Force Free Post 400kg
65641-00	Free Standing Constant Force Post 100kg upgrade kit

V-TEC™ Mini Personal Fall Limiter

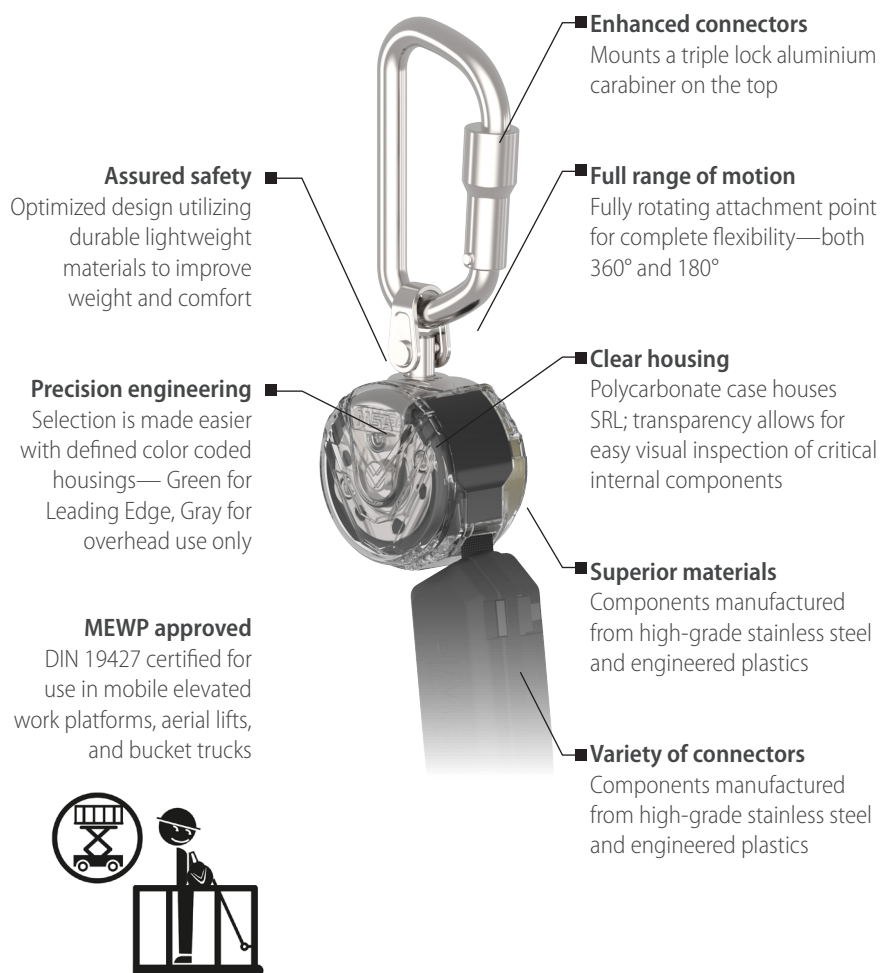


Compact and Versatile

The V-TEC Mini PFL is one of the most compact and lightweight self-retracting lanyards ever developed. The compact design focuses on performance without compromising comfort and productivity. Utilizing field-tested lightweight composites and metals, the V-TEC is one of the lightest PFLs on the market. Unit offers fall arrest and restraint for users 35 to 140 Kg (130-310 lbs) including tools.

Strong and Tested

The V-TEC Mini PFL is manufactured using a lightweight and highly durable polycarbonate clear casing, allowing for easy pre-use inspection of critical internal components. Unit can withstand temperatures ranging from -40° to +54°C.







Standards for V-TEC™ Personal Fall Limiter

The MSA V-TEC PFL has a highly durable polycarbonate, clear casing which allows for easy visual inspection of the critical internal components. It can withstand temperatures ranging from -40° to $+54^{\circ}\text{C}$ and its high-performing, high-strength webbing lifeline has been manufactured to the highest standard in accordance to Latchways' strict quality-control procedures. The product has been tested to meet these relevant standards:

- EN 360:2002
- ANSI/ASSP Z359.7-2019
- AS/NZS 1891.3:2020

Available Connectors for V-TEC™ Mini Personal Fall Limiter

V-TEC Mini PFL offers an aluminum top carabiner and a variety of available connectors.

			
AL36CLS Aluminium Swivel Scaffold Hook 60 mm Gate	36CLS Steel Swivel Scaffold Hook 50 mm Gate	ALTAKS Aluminium Triple Lock Swivel Carabiner 19 mm Gate	36CS Steel Swivel Snaphook 20 mm Gate

Ordering Information

Part Number:	Line Length	Anchorage Connection	Harness Connection	Standards
				EN
VTOHW-011-DH-E	1.8 m (6 ft)	AL36CLS	ALTAK	■
VTOHW-011-DM-E	1.8 m (6 ft)	36CLS	ALTAK	■
VTOHW-011-DC-E	1.8 m (6 ft)	ALTAKS	ALTAK	■
VTOHW-011-DE-E	1.8 m (6 ft)	36CS	ALTAK	■
VTOHW-011-DK-E	1.8 m (6 ft)	SSTAKS	ALTAK	■

MSA Latchways® Specialised Self Retracting Lifeline

Latchways® Sealed SRL

The Latchways® Sealed SRL was designed for hands-free use in harsh environments such as oil rigs, wind turbines and other offshore applications, helping keep workers safe and focused on the task at hand.

Our Sealed SRL has undergone extensive, independently verified testing to ensure consistent, reliable performance.

With cutting-edge technology and engineering, the Latchways® Sealed SRL is one of the most advanced and cost effective SRLs on the market. Like our other SRLs, the Latchways® Sealed SRL may be recertified on site by a Latchways®-trained service technician, helping to lower the cost of ownership and provide a strong return on investment.

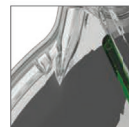
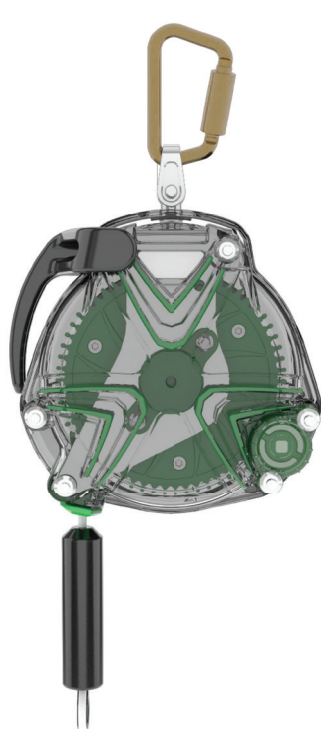
Certified to AS/NZS 1891.3:2020



Part Number	Description	Lifeline	Lifeline Length (m)	Anchorage Connector	Harness Connector
62810-00UKTL	Latchways® Sealed SRL	SS Cable	9	SS TA Swivel Karabiner	DA Karabiner
62816-00UKTL	Latchways® Sealed SRL	SS Cable	15	SS TA Swivel Karabiner	DA Karabiner
62826-00UKTL	Latchways® Sealed SRL	SS Cable	25	SS TA Swivel Karabiner	DA Karabiner
62841-00UKTL	Latchways® Sealed SRL	SS Cable	40	SS TA Swivel Karabiner	DA Karabiner

V-TEC® Standard Self Retracting Lifeline (SRLs) **NEW**

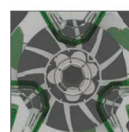
With premium components and innovative engineering, the V-TEC Standard SRL offers controlled cable retraction—preventing excessive lifeline retraction speed and protecting internal parts from damage.



Easy Inspection
Clear outer housing.



Easy Transportation
Carry handle included.



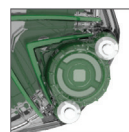
Assured Safety
Spiral radial energy-absorbing technology requires zero calibration or adjustment.



Downtime Minimized
Completely field-serviceable, the cable, energy-absorber, and retraction dampener can all be replaced on site.



Versatile
Galvanized or stainless steel cable.



Durable
Retraction dampening features control the cable speed to 3 m/s (<10 ft./s).



Built to Last
Stainless steel/engineered plastics.

V-TEC Standard SRLs

Part Number	Description
63206-00AEU	V-TEC Standard Cable SRL, 6 m, galvanized cable
63306-00AEU	V-TEC Standard Cable SRL, 6 m, stainless steel cable
63306-00BEU	V-TEC Standard Cable SRL, 6 m, stainless steel cable, stainless steel triple action carabiner
63210-00AEU	V-TEC Standard Cable SRL, 10 m, galvanized cable
63310-00AEU	V-TEC Standard Cable SRL, 10 m, stainless steel cable
63310-00BEU	V-TEC Standard Cable SRL, 10 m, stainless steel cable, stainless steel triple action carabiner
63215-00AEU	V-TEC Standard Cable SRL, 15 m, galvanized cable
63315-00AEU	V-TEC Standard Cable SRL, 15 m, stainless steel cable
63315-00BEU	V-TEC Standard Cable SRL, 15 m, stainless steel cable, stainless steel triple action carabiner

V-EDGE® Leading-Edge Self Retracting Lifelines (SRLs)

Specifically engineered and tested for use at foot-level tie off, the V-EDGE SRL meets ANSI Z359.14-2014 Leading Edge requirements



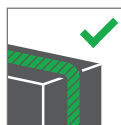
6 m
(10 ft.)



10 m
(30 ft.)



15 m
(50 ft.)



Simplify Selection

Use in a variety of applications, from overhead to horizontal tie off points, and where sharp edges are a concern.



Lower Cost of Ownership

Integrated roll cage protects housing when used in foot-level tie off. Retraction dampening feature controls the life line speed—preventing unwanted damage and maximizing product life.



Get to Work Faster

Clear outer casing allows for quick visual inspection of internal components



Reduce Downtime

Internal components like the cable and energy absorber can be replaced on site—reducing repair times.

Part Number	Description
63406-00AEU	V-EDGE Leading-Edge SRL, 6 m (20 ft), galvanized cable
63406-00BEU	V-EDGE Leading Edge SRL, 6m (20 ft), galvanised cable, stainless steel triple action carabiner
63410-00AEU	V-EDGE Leading-Edge SRL, 10 m (30 ft), galvanized cable
63410-00BEU	V-EDGE Leading Edge SRL, 10m (30 ft), galvanised cable, stainless steel triple action carabiner
63415-00AEU	V-EDGE Leading-Edge SRL, 15 m (50 ft), galvanized cable
63415-00BEU	V-EDGE Leading Edge SRL, 15m (50 ft), galvanised cable, stainless steel triple action carabiner

Horizontal Lifeline

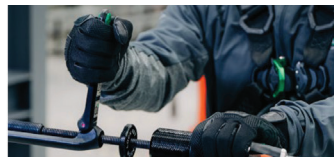
MSA Cable Temporary Horizontal Lifeline

Through intuitive and toolless installation features, MSA's Temporary Horizontal lifeline can help save time on the jobsite when it comes to setting up your lifelines.



Manageable Cable.

Lightweight and flexible galvanized cable makes installation easy.



No Sweat Tensioning. Locking and tensioning mechanisms are on the same side—no need to travel back and forth during set up.



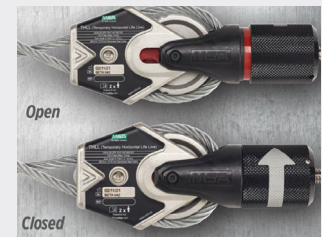
Stanchion Compatibility.

Compatible with MSA Steel and Concrete Stanchions.



Get to Work Faster. No tools required! The MSA temporary horizontal lifeline uses an integrated locking and tensioning mechanism on the handle—eliminating the need for nuts, bolts, and wrenches. This allows for a 75% faster installation compared to traditional cable systems.

Confident Installation. Multiple visual indicators on the system let the user know the system is locked, tensioned, and ready for use.



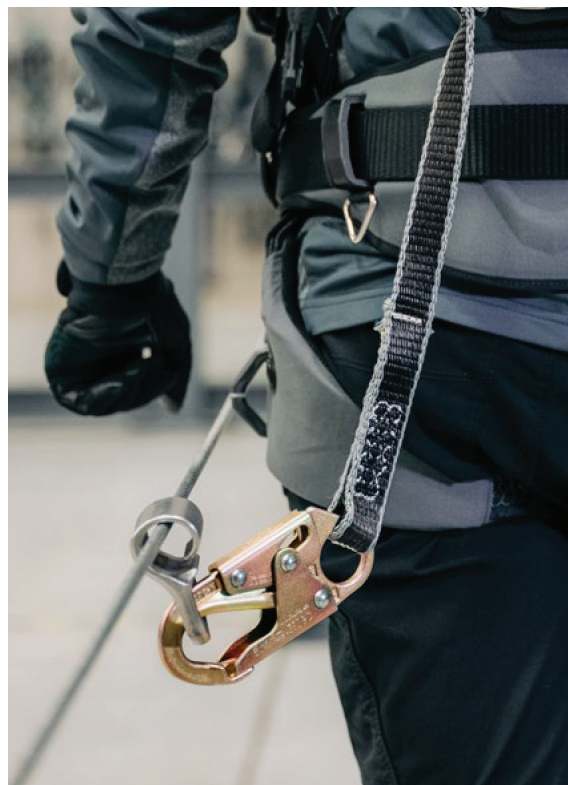
Two cable-lock indicators display red until the system is locked into place.



The tension indicator window goes from red to green once the system is tensioned—letting the user know it's ready for use.

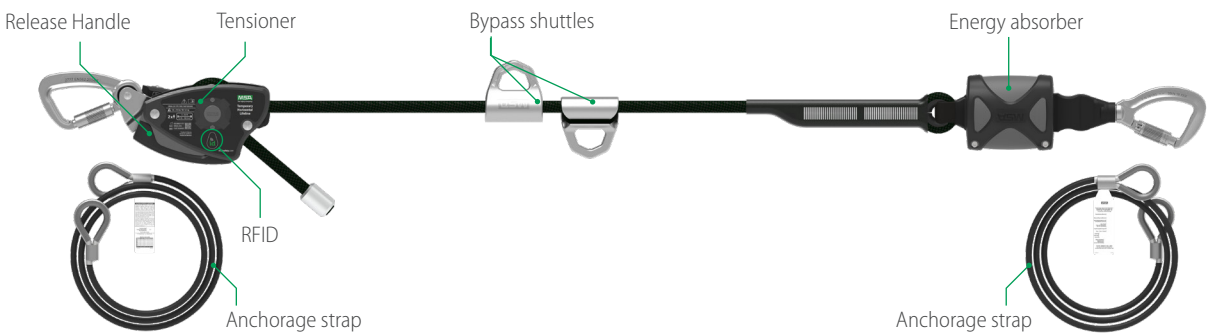


MSA's patented bypass shuttles help users to maintain 100% tie-o while passing each other on the same line, increasing mobility without sacrificing safety.

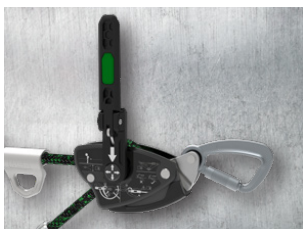


Part Number	Description
10219297	THLL, CABLE, 18.3M, 2 MAN, NON-KIT, EN

MSA Rope Temporary Horizontal Lifeline



Integrated Lock. The integrated locking mechanism on the rope pull through is designed to be easily locked into place without the need for tools.



No Wrenches Required. The integrated flip-up tensioning handle eliminates the need for wrenches or rods in the final tensioning step.



Bypass Shuttles Included. MSA's patented bypass shuttles help users to maintain 100% tie-off while passing each other on the same line, increasing mobility without sacrificing safety.

Part Number	Description
10219301	MSA Rope Temporary Horizontal Lifeline for 2 Workers, 60 ft. (18 m) with bypass shuttles (Anchorage straps not included)
10219302	MSA Rope Temporary Horizontal Lifeline for 2 Workers, 100 ft. (30 m) with bypass shuttles (Anchorage straps not included)

Temporary Webbing Horizontal Lifeline



- This temporary horizontal lifeline is an easily deployable, lightweight 20m horizontal lifeline
- The 35mm heavy duty webbing is tensioned by a ratchet device and allows shorter distances to be spanned as required
- Rated for two people
- Complies with AS/NZS 1891.2:2001

Part Number	Description
765242	20M, Web

V-SHOCK® Self-Retracting Devices

The MSA V-SHOCK Self-Retracting Device line will deliver simple solutions safety managers need and provide end users the confidence needed to do their job without thinking about their PPE. Focused on ease of use, the V-SHOCK Device uses color coding and icons to communicate critical product attributes—specifically leading edge versus non-leading edge use. The line will also feature clearance charts designed for ease of understanding.

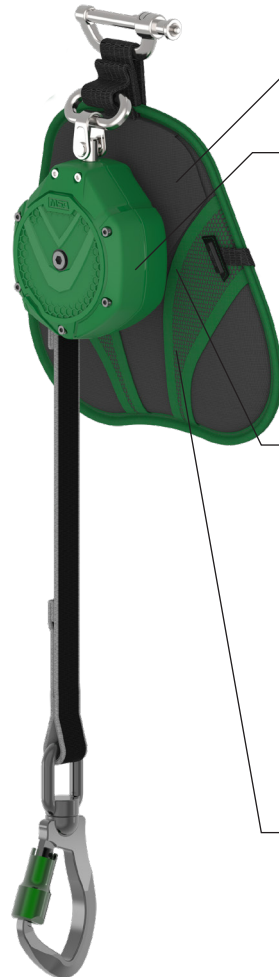
User-focused design elements make the V-SHOCK Self-Retracting Device products easier to use. The leading edge (LE) web PFL allows users to get the job done while working in leading edge scenarios with a product designed to perform in some of the most rigorous environments. Additionally, the LE web PFL bracket design balances the PFLs on the user's back to allow for easier jobsite use.



V-SHOCK Edge
Leading Edge PFLs



V-SHOCK Edge
Leading Edge SRLs



Color Coding & Iconography

Make product selection quick and easy



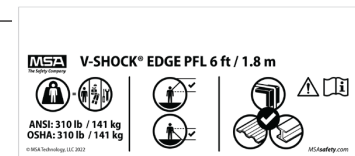
Green Housing
(Leading Edge)



Leading Edge Icon

Dashboard Labels

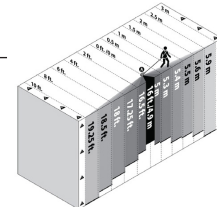
Deliver critical information at a glance



Leading Edge Label

Clearance Charts

Designed for ease of understanding
Leading Edge Clearance Chart




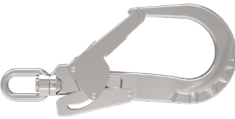
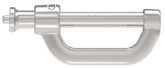


MEWP approved

DIN 19427 certified for use in mobile elevated work platforms, aerial lifts, and bucket trucks



Connectors

	
36CS Steel 21 mm Gate	36CLS Steel 50 mm Gate
	
ALTAKS Aluminium Triple lock 19 mm Gate	AL36CLS Aluminium 60 mm Gate
	
Locking Pin Connector	

Ordering Information

V-SHOCK Edge Leading Edge Galvanized Steel Cable SRL			
Part Number:	Type	Length	Snaphook
VSLEG-061-NE-E	V-SHOCK Edge	6 m (20 ft)	36CS
VSLEG-101-NE-E	V-SHOCK Edge	10 m (30 ft)	36CS
VSLEG-151-NE-E	V-SHOCK Edge	15 m (50 ft)	36CS

V-SHOCK Edge 1.8 m (6 ft) Leading Edge Web PFL				
Part Number:	Type	Single/	Twin	Snaphook
VSLEW-011-PC-E	V-SHOCK Edge	■		ALTAKS
VSLEW-011-PE-E	V-SHOCK Edge	■		36CS
VSLEW-011-PM-E	V-SHOCK Edge	■		36CLS
VSLEW-011-PH-E	V-SHOCK Edge	■		AL36CLS
VSLEW-012-PC-E	V-SHOCK Edge		■	ALTAKS
VSLEW-012-PE-E	V-SHOCK Edge		■	36CS
VSLEW-012-PM-E	V-SHOCK Edge		■	36CLS
VSLEW-012-PH-E	V-SHOCK Edge		■	AL36CLS

V-SHOCK Edge 2.5 m (8 ft) Leading Edge Web PFL				
Part Number:	Type	Single/	Twin	Snaphook
VSLEW-021-PC-E	V-SHOCK Edge	■		ALTAKS
VSLEW-021-PE-E	V-SHOCK Edge	■		36CS
VSLEW-021-PM-E	V-SHOCK Edge	■		36CLS
VSLEW-021-PH-E	V-SHOCK Edge	■		AL36CLS
VSLEW-022-PM-E	V-SHOCK Edge		■	36CLS
VSLEW-022-PH-E	V-SHOCK Edge		■	AL36CLS

Performance Specifications	
STANDARDS & CAPACITY* EN 360 DIN 19427	35 - 140 kg (77-310 lb)
MAXIMUM ARREST FORCES PEAK AVERAGE	470 kg (1,029 lb.) 366 kg (800 lb.)

Fall Protection Accessories

Suspension Trauma Safety Step



- Lightweight web ladder design to reduce the onset of suspension trauma during post-fall suspension
- Loops allow user to flex leg muscles and relieve leg strap pressure while suspended prior to rescue
- When connected to the fall arrest connection that the fall has occurred on, force and pressure is transferred back onto the anchor point, rather than onto the body

PART NO:	Description
10063431	With Karabiner
10063441	Without Karabiner

Bosun Chair



- Best method to sit suspended for long durations
- Padded seat ensures comfort during use
- Adjustable web assembly for added security

PART NO:	Description
SSH3505017	Bosun Chair

Yoke Extension



- Harness accessory that can be used as a dorsal extension to the rear D-Ring or Type 1 device when connected to the front D-ring during ladder climbing
- Extension is 300mm in length and features a double action snaphook at one end and a D-ring connection at the other

PART NO:	Description
10157151	Yoke Extension

Wrist Tool Loop



This economical tool strap attaches to a users wrist and the cord at the opposite end secures the tool

PART NO:	Description
10157519	Tool Wrist Loop

Hands Off Chisel Grip Tool Holder



PART NO:	Description
10040018	Chisel Grip
10042431	Replacement Strap

- Keeps hands away from the point of contact
- Ergonomically designed to match the specific shape of the human hand for a comfortable and firm grip
- Easy adjustment to hold a variety of chisels and stakes up to 1" in diameter
- Vibration absorbing handle
- Spark resistant








Ergonomic Tool Holders



- Holds wrenches, chisels etc
- Vibration absorbing design
- Eases awkward hand positioning

PART NO:	Description
507005	Length 460mm

ANZ Karabiner Range

Part Number	Description	Image
765807	Karabiner, Screwgate, Steel, 15mm Gate	
10113006	Karabiner, Screwgate, Alloy, 18mm Gate	
10089207	Karabiner, Autolock, Steel, 25mm Gate	
10222298	Karabiner, Triple action, Stainless Steel, 25mm Gate	
10089209	Karabiner, Autolock, Steel, 50mm Gate	
765802	Delta Rapide, Steel, 15mm Gate	
229704M	Scaffold Hook, Double Action, Steel, 55mm Gate	

MSA - The Safety Company

Our business is safety. We've been the world's leading manufacturer of high-quality safety products since 1914. MSA products may be simple to use and maintain, but they're also highly-sophisticated devices and protective gear - the result of countless R&D hours, relentless testing and an unwavering commitment to quality that saves lives and protects thousands of men and women each and every day. Many of our most popular products integrate multiple combinations of electronics, mechanical systems and advanced materials to help ensure that users around the world remain protected in even the most hazardous of situations.

As MSA Australia's policy is one of continuous product improvement, changes to specifications and prices can be made without notification. For up to date product information refer to: www.msasafety.com

NOTE: This Bulletin contains only a general description of the products shown. While uses and performance capabilities are described, under no circumstances shall the products be used by untrained or unqualified individuals and not until the product instructions including any warning or cautions provided have been thoroughly read and understood. Only they contain the complete and detail information concerning proper use and care of these products.

Your direct contact

MSA Australia

11 Columbia Way
Norwest Business Park
BAULKHAM HILLS NSW 2153
PO Box 7325
BAULKHAM HILLS NSW 2153
Phone: 61 2 9688 0333
Customer Service: 1300 728 672
Fax: (02) 9896 1835
E-mail: aus.customerservice@MSAsafety.com

MSA New Zealand

Customer Service: 0800 441 335
E-mail: nz.customerservice@MSAsafety.com