

SPECIFICATION SHEET

Hand Protection



KOSTO
BUILT STRONG • BÂTI SOLIDE

Chemical and A6 Cut resistant PVC and NBR Coated Glove

MKCV25

Description

These Kosto work gloves are fully coated with PVC and NBR for excellent, ultra-resistant protection and flexibility, and feature an A6 cut-resistant lining. They offer high resistance to oil and many chemicals to keep your hands dry and protected, whatever the task. The PVC foam finish also enhances grip, perfect for handling objects in wet environments.

Certification

- ANSI/ISEA 105-2023 :
Cut resistance: **A6 - 3278g**
Abrasion: **6**
Puncture: **3**
- EN 388:2016 : **4342x**
- EN ISO 374-5: 2024 **Micro organism**
- EN ISO 374-1 :2024 **Permeation: Type B JKL**
(Les Type B gloves offer protection against chemical penetration for at least 30 minutes for at least 3 chemicals tested).

Material

- PVC-NBR coated 3 layers
- Aramid/steel lining, cut-resistant level A6

Size

S to 2XL



Made of 3 layers
of PVC & NBR

PVC foam finish
for better grip

14" length

Seamless aramid lining,
level A6 cut protection

Chemical Code	Chemical name	Level
J	n-Heptane	Level 2
K	Sodium hydroxide 40%	Level 6
L	Sulphuric acid 96%	Level 4



EN 388:2016



4342X

EN ISO 374-1:2016
+A1:2018 / Type B

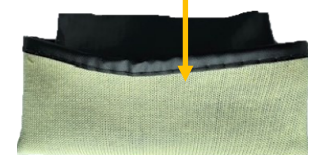


JKL

ISO 374-5
:2016



ANSI/ISEA 105



PROTECTION • RELIABILITY • QUALITY

WWW.SPI.COM

UPD: 06-25

SPECIFICATION SHEET

Hand Protection



KOSTO
BUILT STRONG • BÂTI SOLIDE

Related Products

PVC-NBR glove 3-layers
MKC010



PVC - Hi-viz Coated
MKC650
With cotton support



PVC-NBR glove 3-layers
MKCV35
A5 cut and impact



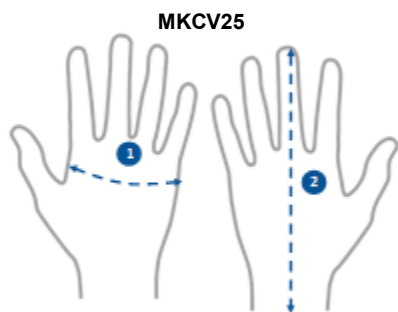
Care and washing instructions

A good way to keep gloves longer is to clean them regularly.

- Clean by hand with a mild and/or natural soap
- Clean with a soft, damp cloth, removing any dirt
- Air dry only
- Do not use bleach



Sizing Chart



Size Kosto *			S	M	L	XL	XXL
1	Width (hand)	cm	11	11.5	12	12.5	13
		po / in	4.3	4.5	4.7	4.9	5.1
2	Length (glove)	cm	35	35	35	35	35
		po / in	14	14	14	14	14

* The measurements are those of the product.

* A fitting is always recommended.